



Ridge soaring Info

LSV Bückeburg-Weinberg e.V.





LSV Bückeburg

we give you the opportunity to experience ridge flying on the „Porta & Ith“-ridge **we provide** you all service **cost efficient** and **straightforward** via **winch launch** or **aero tow** onto the ridge.

We supply **accommodation** in **single-** or **multi bedroom** all year.

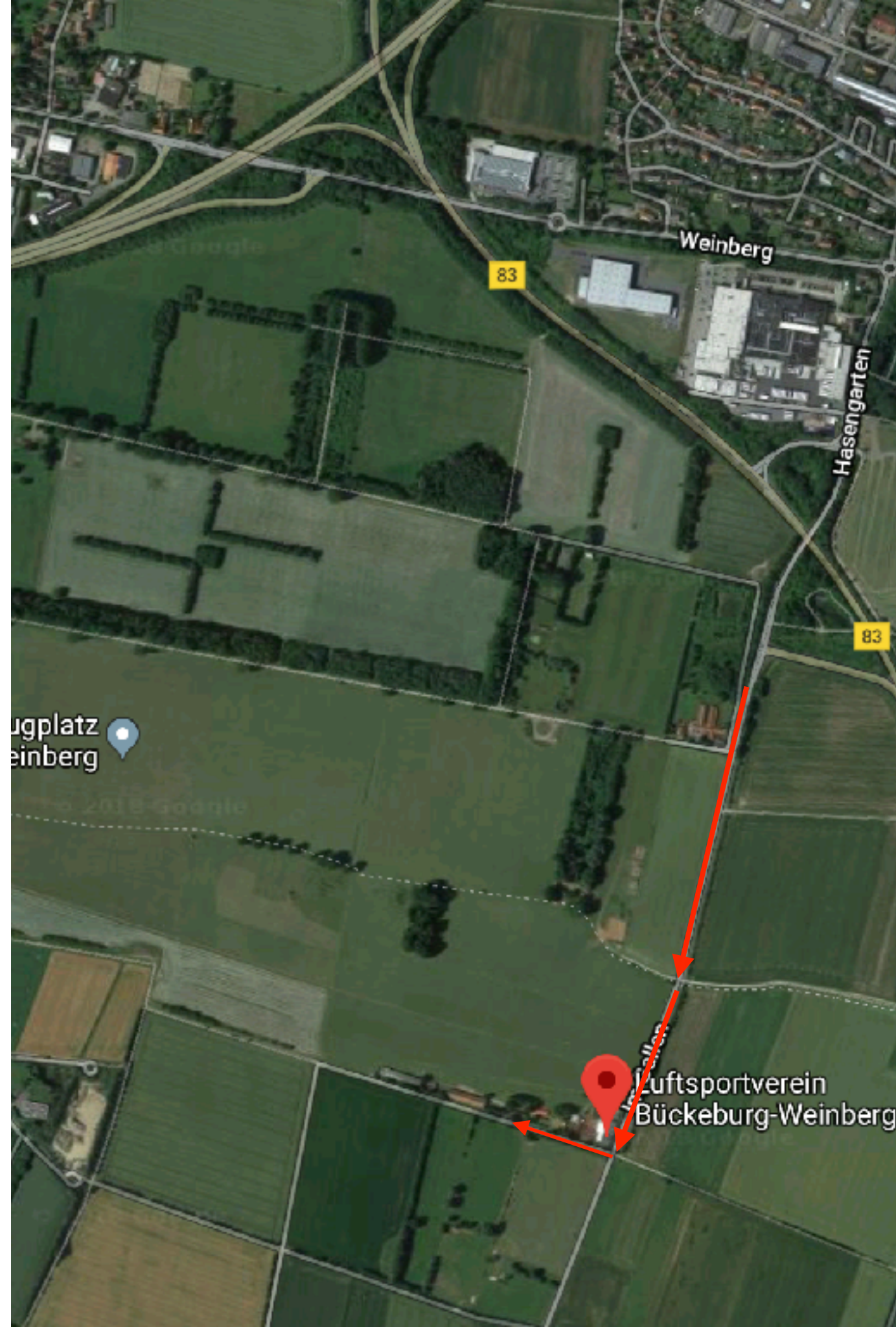
The document consist of, ridge flying info at the airfield of the LSV Bückeburg, contact data and prices.

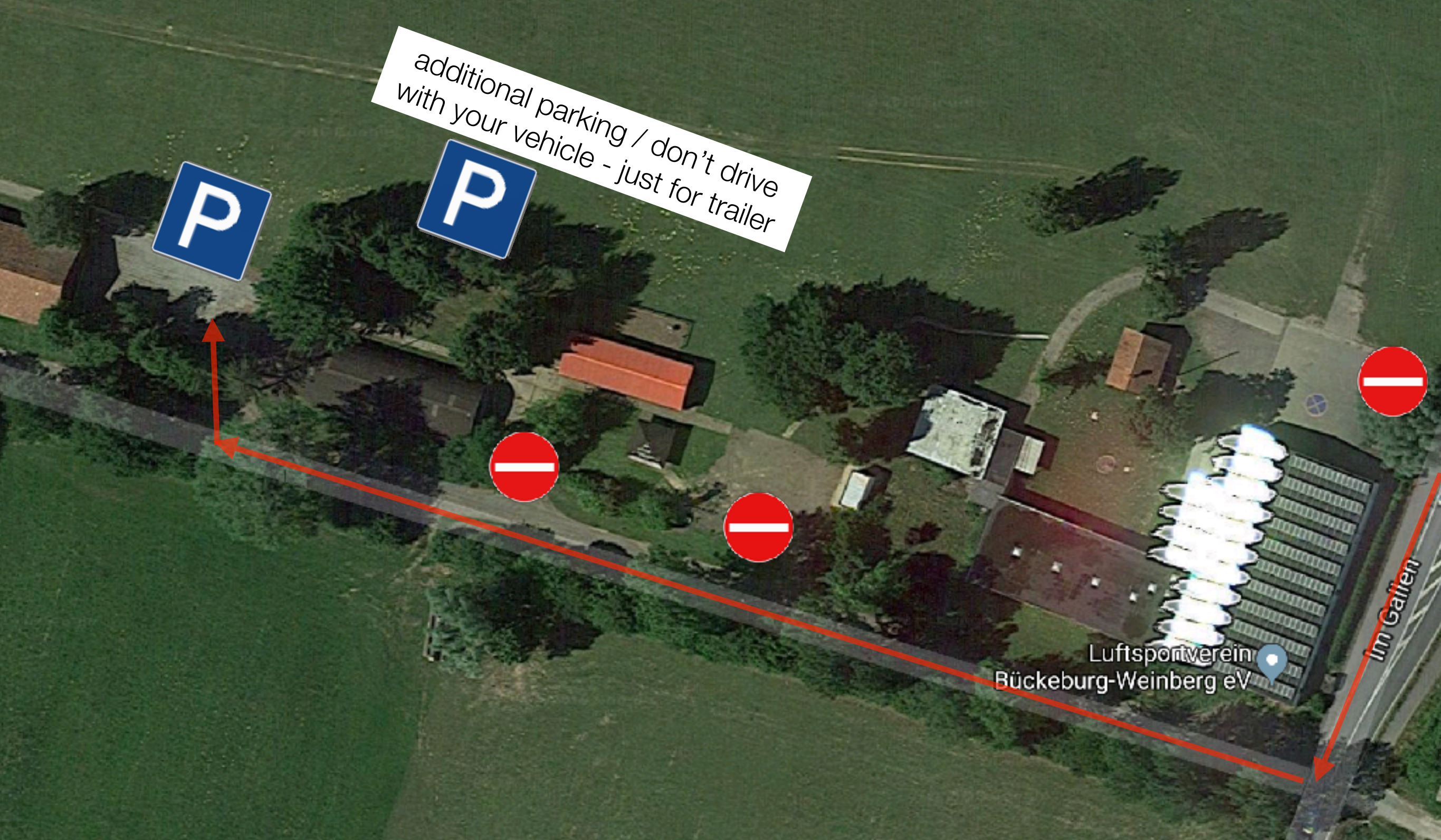
(The hole content is just a guide line. All given values are related to weather, proficiency level of aircrew and aircraft type, this may lead to some individual adjustments)



How to approach

LSV Bückebug-Weinberg e.V.
Im Gallen 5
32457 Porta Westfalica





Parking & Glider assembly

usage of paved ground is MANDATORY

Airfield frequency:
135.090MHz



Grid line-up

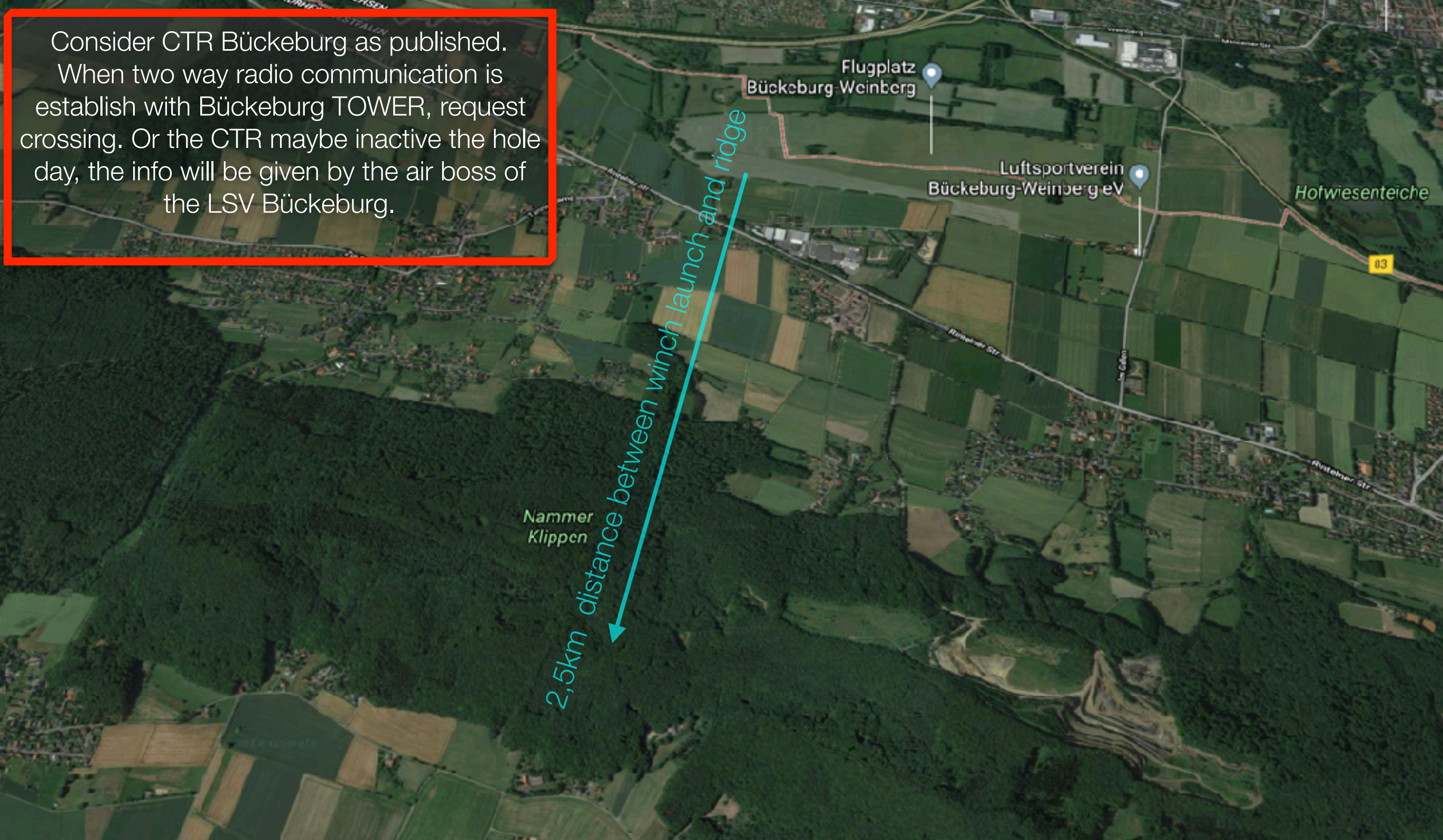
Push all aircraft via man power/manually in the grid

Nice to know:

- Airfield ELEV. : 77m MSL/ 252ft MSL

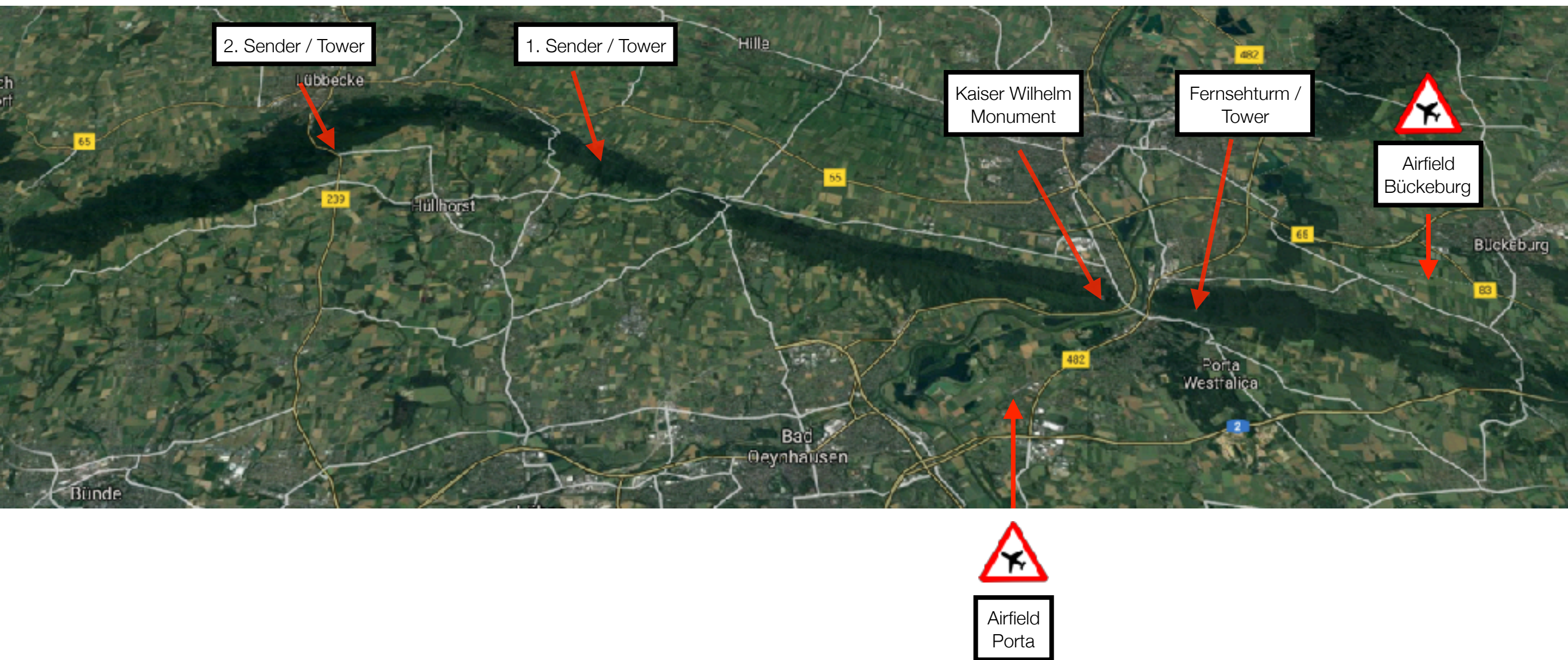


Consider CTR Bückeberg as published.
When two way radio communication is establish with Bückeberg TOWER, request crossing. Or the CTR maybe inactive the hole day, the info will be given by the air boss of the LSV Bückeberg.



How to approach the ridge

Even via winch launch with a club class glider onto the ridge

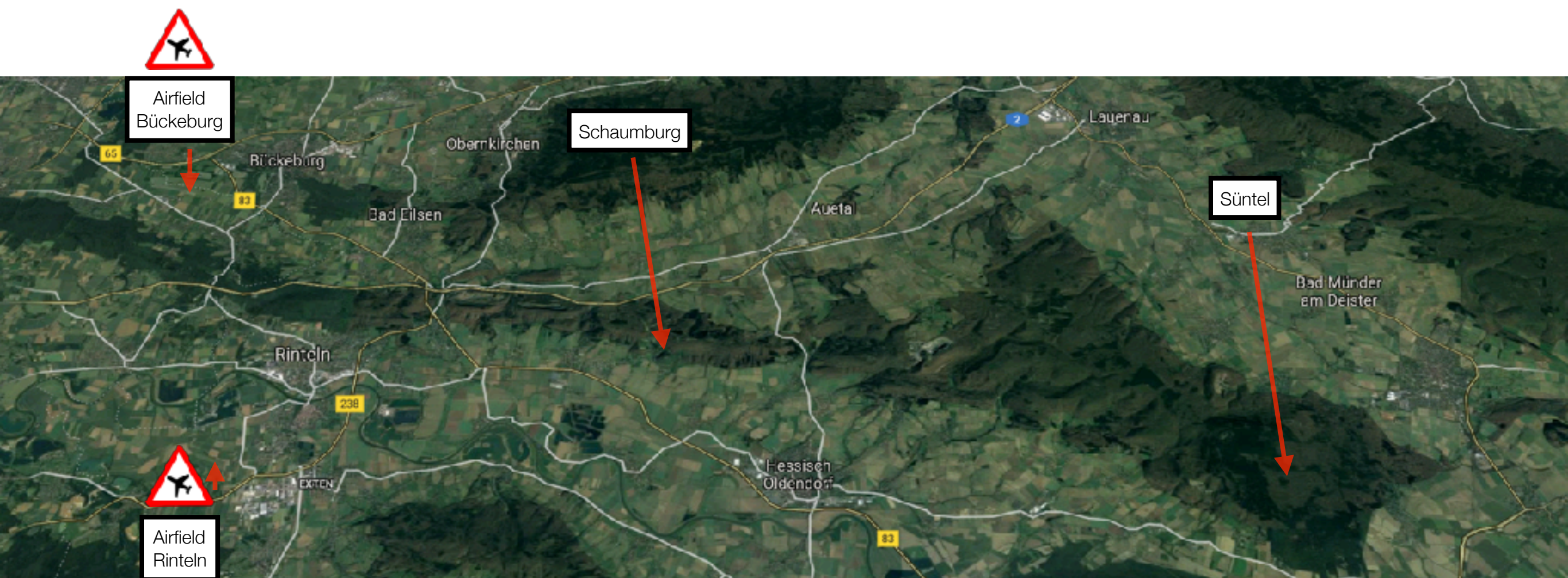


Western departure

Nice to know:

- frequency on the ridge: 122.800Mhz
- aircraft with right wing on the ridge has the right of way
- distances on radio communication in kilometers in relation to Bückeberg airfield
- ridge departs from Bückeberg are generally the west





Direction East

minimum crossing altitude to depart to the lth
 form the Süntel and back:
 - Süntel -> to -> lth: 700m
 - lth -> to -> Süntel: 800m



Airfield frequency:
135.090MHz

Approaching Bückeberg

- establish early two way radio communication
- say your position in relation to the field, distance and estimated time of arrival
- **between the Fernsehturm and the Besucherbergwerk you can always reach the airfield if you are above the ridge line**
- clear the runway after landing as quick as possible



Infos

- the most reliable part of the ridge is the portion after the Kaiser Wilhelm monument and further to the west
- to circle on the ridge is useful before departure to the lth and back or after the wind turns eg. due to rain showers
- don't rely on your MacReady
- thermals can support the ridge lifts
- Vno – transition from the green to the yellow portion of your airspeed indicator, should be your max speed due to turbulent air
- you will find the best laminar lift 100-300m on top of the ridge
- wave right over the top of the airfield Bückeburg will persist at south/south/easterly-winds
- the wave at the Schaumburg & Ithwiesen can be approached straight from the ridge
- if a rain shower hits the ridge generally the wind will turn further west and ease of a bit



Infos

- forecast services
 - <http://www.windfinder.com/forecast/bueckeburg>
 - <http://www.wetterzentrale.de/topkarten/fsmetgrg05.html>
- you'll need 10kt windspeed out of 210°
- the general situation for out landing is good, you've got enough fields next to the ridge especially during autumn if the vegetation is gone
- start with an easy pace and don't over pace your self



Prices

- Winch launch: 15€
- Aero tow (to the ridge): 40€
- Accommodation: 10€/Night
- Camping: free
- Hangar parking for aircraft: 10€/Tag
- Hangar parking for trailer: 10€/Tag



Contact

- Christian Barton
(ridge flying request)
Tel.: 0049152/33684558
- Tobias Werner
(ridge flying request)
Tel.: 0049177/3919810
- Christian Lasche
(Accommodation request)
Tel.: 0049176/56823462

